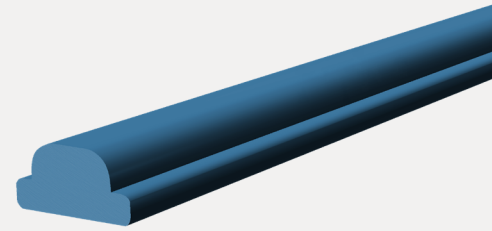




SWELLBAR C

Hydro-expansive Waterstop Cord on Polyethylene,
Butyl Rubber, Resin and Elastomeric Binders



PRODUCT DESCRIPTION

SUPERSHIELD SWELLBAR C is a hydro-expansive sealing waterstop cord designed for sealing construction joints in structures, walls, and foundations. It is composed of a mixture of polyethylene, butyl rubber, resin and elastomeric binders. SWELLBAR C is characterized by excellent mechanical strength and elasticity. It exhibits a gradual and controlled expansion when exposed to water. This timing ensures that fresh concrete can set properly without experiencing deformations. Even after multiple hydration and dehydration cycles, SWELLBAR C retains its volume expansion capability. Additionally, SWELLBAR C demonstrates high hydraulic resistance, effectively withstanding hydrostatic pressure equivalent to a 120-metre (12 bar) water column.

AREA OF APPLICATION

- Specifically designed for use with our unique PVC waterstop, SUPERSHIELD JOINTBELT CI.
- Effective sealing of penetrations in metal, concrete, and PVC, including narrow sections.



Lease Life
to Man-Made
Structures

SWELLBAR C

TECHNICAL DATA

General Characteristics	
PROPERTY	VALUE
Color	Blue
Density	$1.2 \pm 0.03 \text{ g/mm}^2$
Temperature of Use	$-20^\circ\text{C} / +50^\circ\text{C}$
Performance Characteristics	
CHARACTERISTICS	PERFORMANCE
Shore A	40
Hydro Expansive Product Expansion	$\geq 500\%$
Tensile Stress	$\geq 3.50 \text{ N/mm}^2$
Longitudinal Elongation at Break	$\geq 600\%$
Hydrostatic Pressure Resistance	12 bar



APPLICATION GUIDELINES

Application

The SWELLBAR C waterstop can be used in conjunction with the PVC waterstop profile SUPERSHIELD JOINTBELT CI by simply inserting it into the channels prepared at both ends of the waterstop profile. For waterproofing penetrations such as steel, concrete, or PVC pipes, bond the SWELLBAR C to the substrate using SUPERSHIELD SWELLGEL.

To ensure proper sealing, the rib should be abutted by at least 5 cm without overlapping. The positioning must guarantee that the concrete covers the waterstop by at least 8 cm on each side to contain the expansive action generated during hydration. For further information, please contact Supershield.

HEALTH AND SAFETY

Use Personal Protective Equipment (PPE) like gloves, masks and glasses during installation. For further instructions on a safe use of the product please refer to safety datasheets.

STORAGE

Store in dry conditions, protected from heat, frost and direct sunlight. Shelf life is 12 months.

PACKAGING

SWELLBAR C is packaged in rolls of 40 metres each (Box of 40 metres - 10 x 4m rolls).

WARRANTY

Supershield warrants that its products will be free from material defects and will comply with the specifications provided in their respective technical data sheets. If any product is proven to be defective, Supershield's liability will be limited to the replacement of the product. Supershield will not be liable for any incidental or consequential damages. No other warranties, express or implied, shall apply, including warranties of merchantability or fitness for a particular purpose. It is the user's responsibility to determine the suitability of the product for their intended use and to assume all risks and liabilities associated with its application. Supershield reserves the right to alter the properties of its products without prior notice.