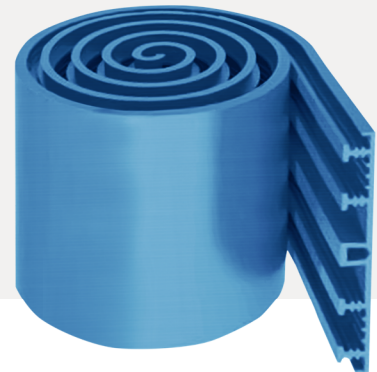




## JOINTBELT EXT B

PVC Waterstops with Central Bulb for  
External Side of Expansion Joints



### PRODUCT DESCRIPTION

SUPERSHIELD JOINTBELT EXT B is a polyvinyl chloride (PVC) waterstop with a central bulb specifically designed to provide effective sealing of the external side of expansion joint areas ensuring durable waterproofing. It is resistant to harsh environments, aging, degradation, saltwater intrusion, UV radiation, and ozone exposure, as well as a wide array of chemicals and atmospheric agents commonly present in groundwater and air. It can accommodate joint movements while also preventing water from passing through them. SUPERSHIELD JOINTBELT EXT B possesses flexibility, resilience, toughness, chemical inertness, resistance to weathering, low temperatures, and continuous water immersion.

### AREAS OF APPLICATION

- Foundation Works
- Sewage Treatment Plants
- Tunnels
- Power Stations
- Bridges
- Water Treatment Plants
- Lock and Dam Systems
- Reservoirs and Aqueducts
- Flood Walls
- Potable Water Reservoirs
- Retaining Walls
- Containment Structures and Tanks
- Floor Slabs
- Parking Areas
- Industrial Buildings

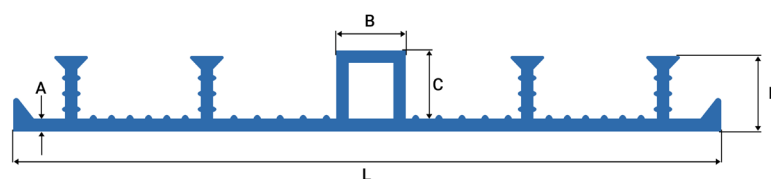
## TECHNICAL DATA

### General Characteristics

PROPERTY	VALUE
Colour	Black /Blue
Density - ISO 1183	1.36 ± 0.03 g/cc

### Performance Characteristics

TEST NAME	TEST METHOD	PERFORMANCE
Shore A Hardness	ISO 868	72 ± 5
Tensile Strength	ISO 527	≥ 10 N/mm <sup>2</sup>
Elongation at break	ISO 527	≥ 300 %
Stiffening Temperature	ISO 458/2	-30 ° C
Inflammability	UL 94	Class V0



Product Variation	A [mm]	B [mm]	C [mm]	D [mm]	L [mm]
JOINTBELT EXT B 150	2.3	3.5	23	27	150
JOINTBELT EXT B 250	2.5	4.0	25	30	250



## APPLICATION GUIDELINES

### Application

During concrete pouring, place SUPERSHIELD JOINTBELT EXT B externally, and its central bulb should be positioned along the in-between space of two concrete placements. For wall and slab sections, ensure attachment to the formwork. Steel fastening clips secure the SUPERSHIELD JOINTBELT EXT B to the concrete reinforcement, ensuring that it remains in place during pouring and vibration. Alternatively, secure it with wire to prevent displacement during pouring or vibration-induced consolidation. For longer joint spans, you can connect SUPERSHIELD JOINTBELT EXT B profiles with hot welding or specialized accessories.

### Cutting and welding instructions:

For a successful weld, use either an electrical blade or a welding device with the correct cross-section. Begin by cutting the sections at a precise angle and meticulously removing any impurities or irregularities from the surfaces. Ensure the welding tool is clean and positioned securely before heating.

Position the welding components on a stable, level surface. Apply slight pressure to the cut surfaces against the heated welding tool until a liquid mass appears on both sides. Then, release the pressure carefully to remove the welding tool and press the seam together until it cools down, typically within 30–60 seconds.

It's best to have two people involved in this process for optimal results. While one person handles the welding tool, the other should assist by pressing the seams together. Move swiftly during welding, ensuring the heated points don't cool before they fully fuse. Excessive heating can cause PVC to char or result in inadequate bonding.

PVC melts between 120 and 140°C and burns between 160 and 180°C, so adjust the welding device's temperature accordingly.

### HEALTH AND SAFETY

No special measures required. For further instructions on a safe use of the product please refer to safety datasheets.

### STORAGE

Store in dry conditions, protected from heat, frost and direct sunlight.

### PACKAGING

SUPERSHIELD JOINTBELT EXT B 150 - 25m Rolls.  
SUPERSHIELD JOINTBELT EXT B 250 - 15m Rolls.

### WARRANTY

Supershield warrants that its products will be free from material defects and will comply with the specifications provided in their respective technical data sheets. If any product is proven to be defective, Supershield's liability will be limited to the replacement of the product. Supershield will not be liable for any incidental or consequential damages. No other warranties, express or implied, shall apply, including warranties of merchantability or fitness for a particular purpose. It is the user's responsibility to determine the suitability of the product for their intended use and to assume all risks and liabilities associated with its application. Supershield reserves the right to alter the properties of its products without prior notice.