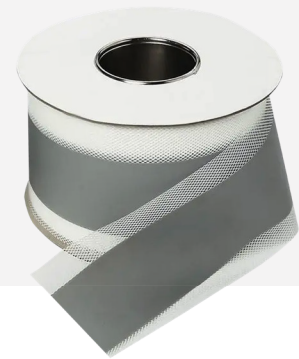




FLEXSTRIP LF 120

Elastic Tapes for Construction Joints



PRODUCT DESCRIPTION

SUPERSHIELD FLEXSTRIP LF 120 Tape, made from a thermoplastic elastomer polyester mesh, is designed for isolating critical points in construction. It is ideal for use in wet areas such as bathrooms and toilets, as well as watertight constructions, roofs, and parapets.

TECHNICAL DATA

General Characteristics	
PROPERTY	VALUE
Thickness	0.50 ± 0.05 mm
Product Width	160 mm, 240 mm
Temperature of Use	-40°C / +90°C



Lease Life
to Man-Made
Structures

FLEXSTRIP LF 120

APPLICATION GUIDELINES

Consumption

Use 1 metre of SUPERSHIELD FLEXSTRIP LF 120 per linear metre of joint.

Application Method

Before application, ensure that the surfaces to be treated are free from loose parts, traces of grease, paint, and thoroughly cleaned of dust.

HEALTH AND SAFETY

Use Personal Protective Equipment (PPE) like gloves, masks and glasses during installation. For further instructions on a safe use of the product please refer to safety datasheets.

STORAGE

Store in dry conditions, protected from heat, frost and direct sunlight.

PACKAGING

10 m and 50 m Rolls.

WARRANTY

Supershield warrants that its products will be free from material defects and will comply with the specifications provided in their respective technical data sheets. If any product is proven to be defective, Supershield's liability will be limited to the replacement of the product. Supershield will not be liable for any incidental or consequential damages. No other warranties, express or implied, shall apply, including warranties of merchantability or fitness for a particular purpose. It is the user's responsibility to determine the suitability of the product for their intended use and to assume all risks and liabilities associated with its application. Supershield reserves the right to alter the properties of its products without prior notice.